

Statewide Average



\$1,857

Up 4.3 Percent

High Grade Land



\$2,324

Up 3.3 Percent

Medium Grade Land



\$1,701

Up 4.4 Percent

Low Grade Land



\$1,117

Up 6.9 Percent

Northwest

\$2,198

High
2,547

Medium
2,001

Low
1,370

Up 6.8 Percent

North Central

\$2,169

High
2,462

Medium
1,972

Low
1,387

Up 4.6 Percent

Northeast

\$1,868

High
2,329

Medium
1,728

Low
1,167

Up 3.4 Percent

West Central

\$1,924

High
2,375

Medium
1,772

Low
1,126

Up 4.7 Percent

Central

\$2,195

High
2,660

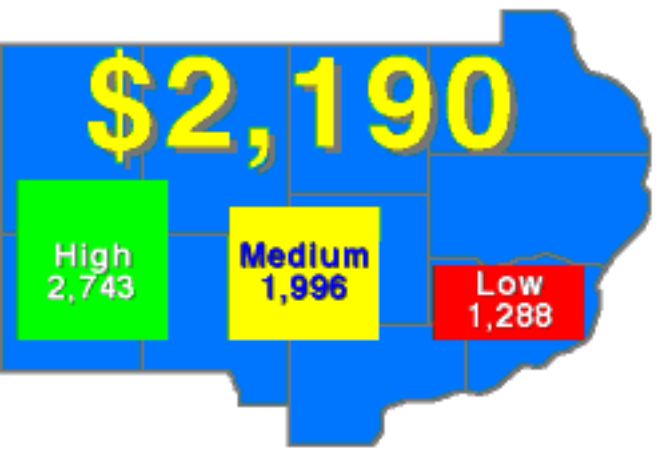
Medium
1,956

Low
1,299

Up 3.1 Percent

East Central

\$2,190



High
2,743

Medium
1,996

Low
1,288

Up 3.4 Percent

Southwest

\$1,412

High
1,825

Medium
1,320

Low
862

Up 4.9 Percent

South Central

\$992

High
1,509

Medium
955

Low
597

Up **1.1** Percent

Southeast

\$1,655

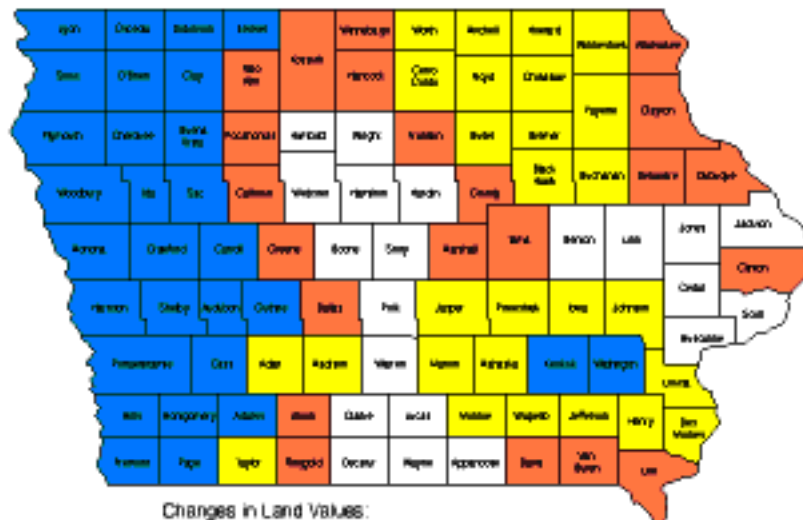
High
2,353

Medium
1,511

Low
875

Up **5.4** Percent

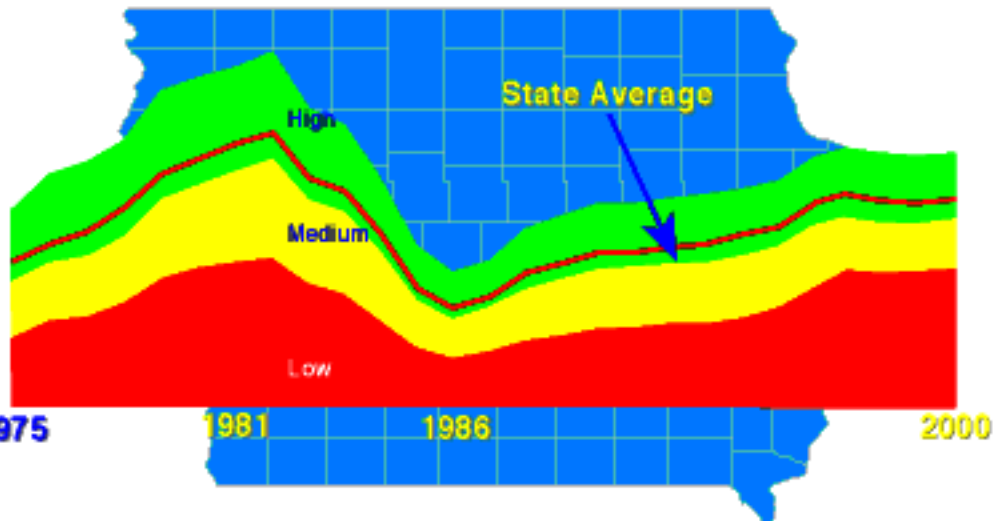
Percentage Changes



Changes in Land Values:

- Increased 3% or less
- Increased 3.1% to 4%
- Increased 4.1% to 5%
- Increased more than 5%

25-Year Average Values



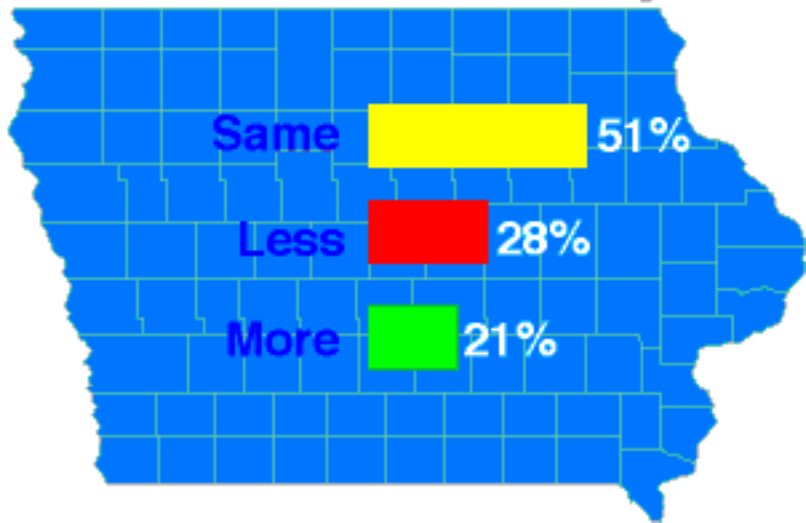
By Land Classification

2000 Sales Activity

Same 51%

Less 28%

More 21%



2000 Sales Activity



Same **Less** **More**

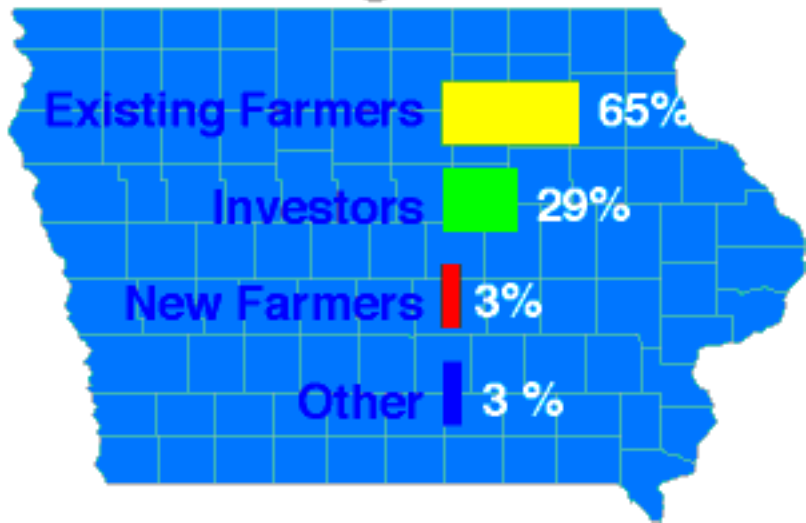
Who Bought Land

Existing Farmers 65%

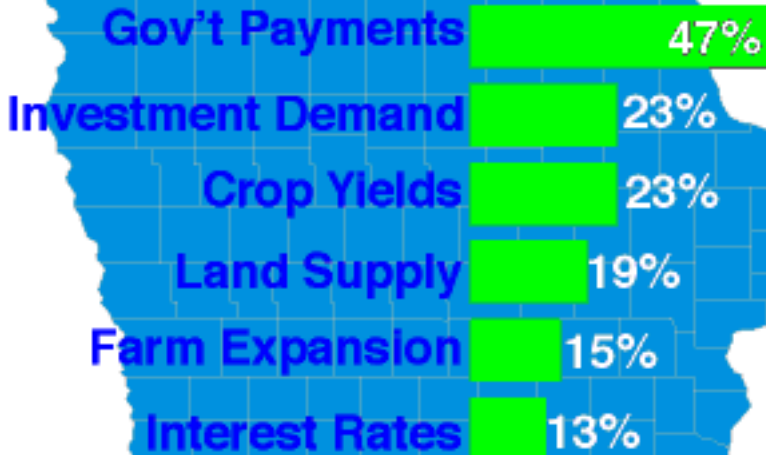
Investors 29%

New Farmers 3%

Other 3%



Positive Factors

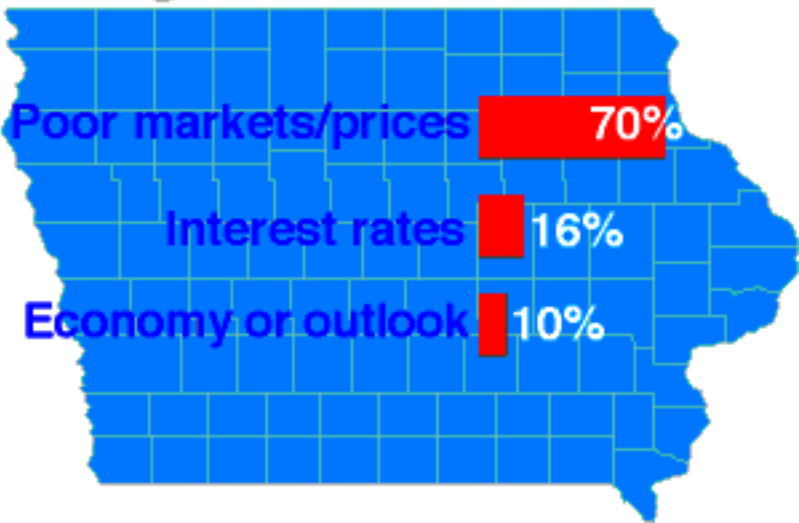


Negative Factors

Poor markets/prices 70%

Interest rates 16%

Economy or outlook 10%



On the Web:



**[www.extension.iastate.edu/
Pages/communications/2000LVS/](http://www.extension.iastate.edu/Pages/communications/2000LVS/)**