

Iowa Land Value Survey

2004

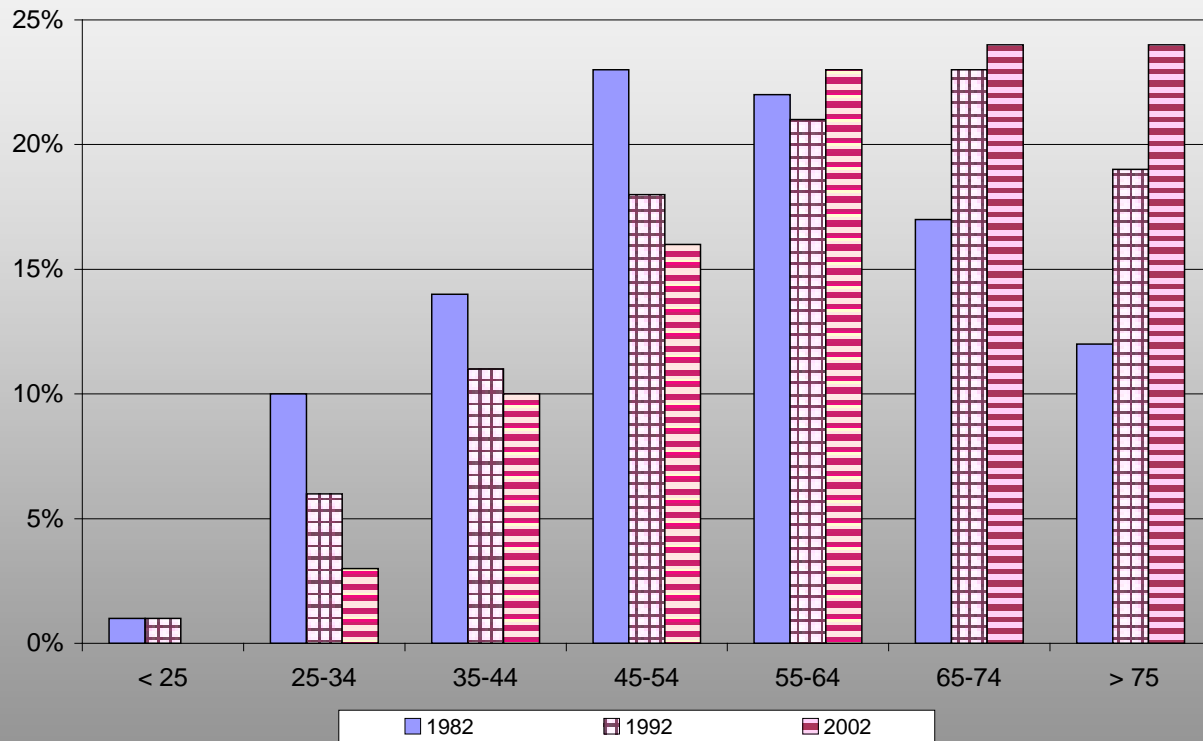
Dr. Michael Duffy, Extension Economist
Darnell Smith, Research Associate

Are We Setting Ourselves Up for Another Fall?

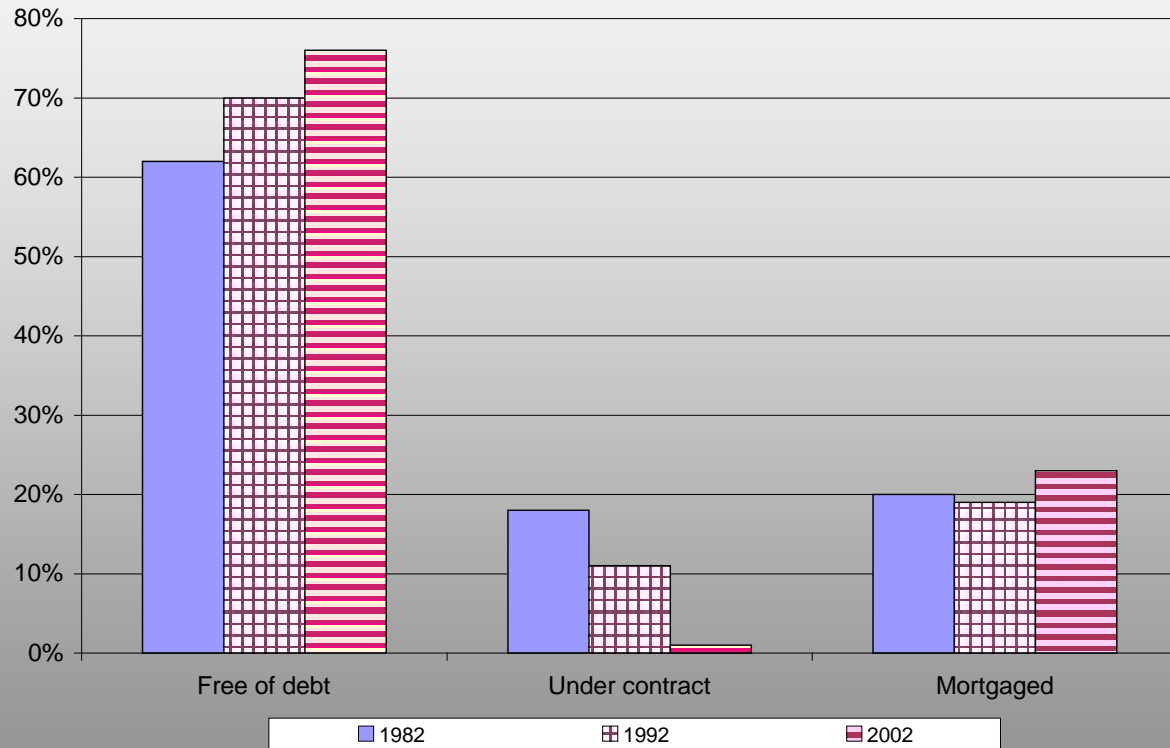
Different Financial Situation

- More land without debt
- Less land held under contract
- Different reasons why we are here

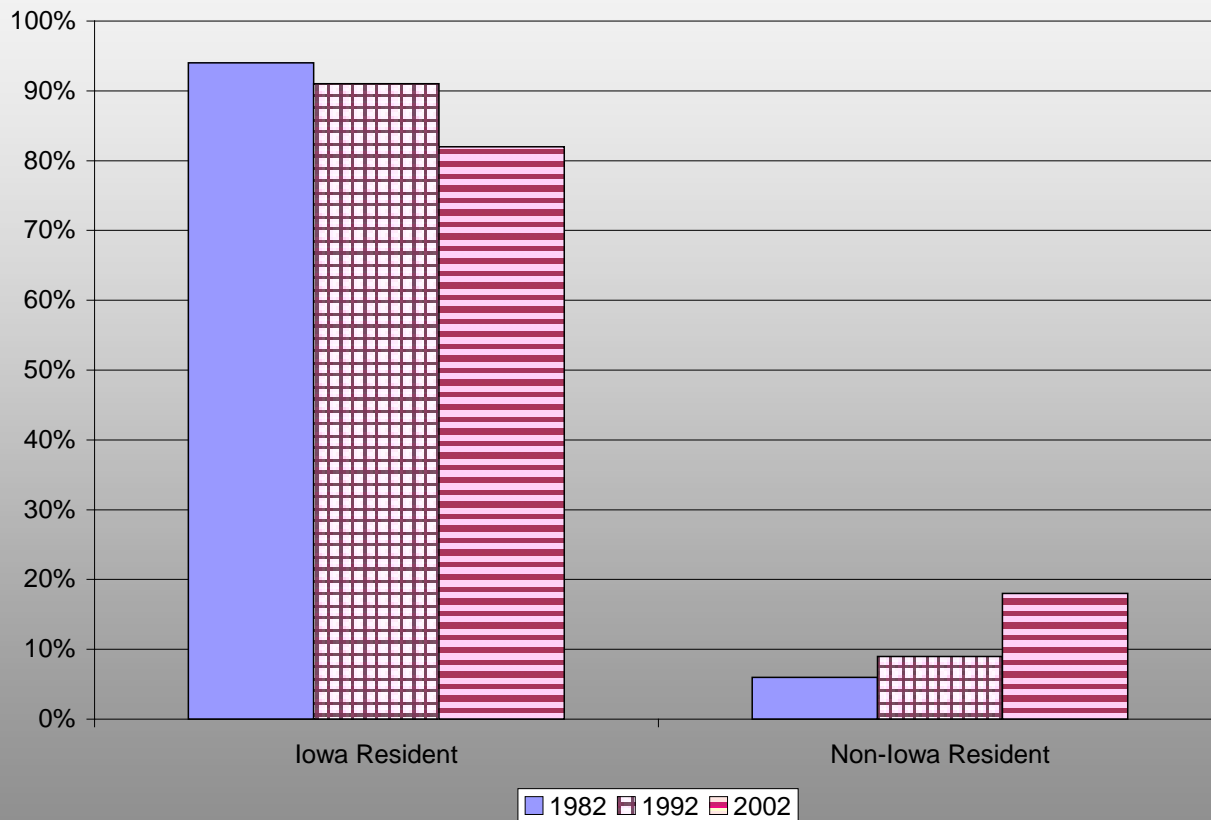
Distribution of Iowa Farmland by Age of Owner and Year



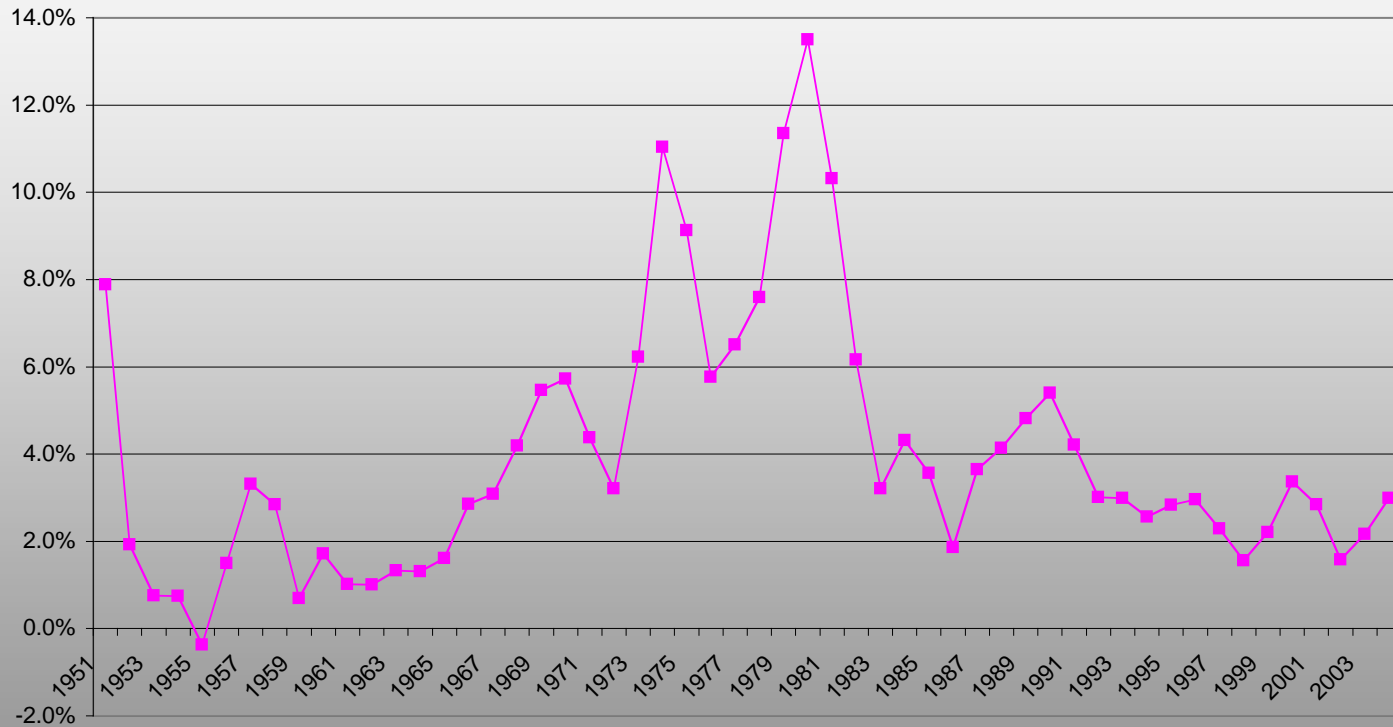
Distribution of Iowa Farmland by Financing Method and Year



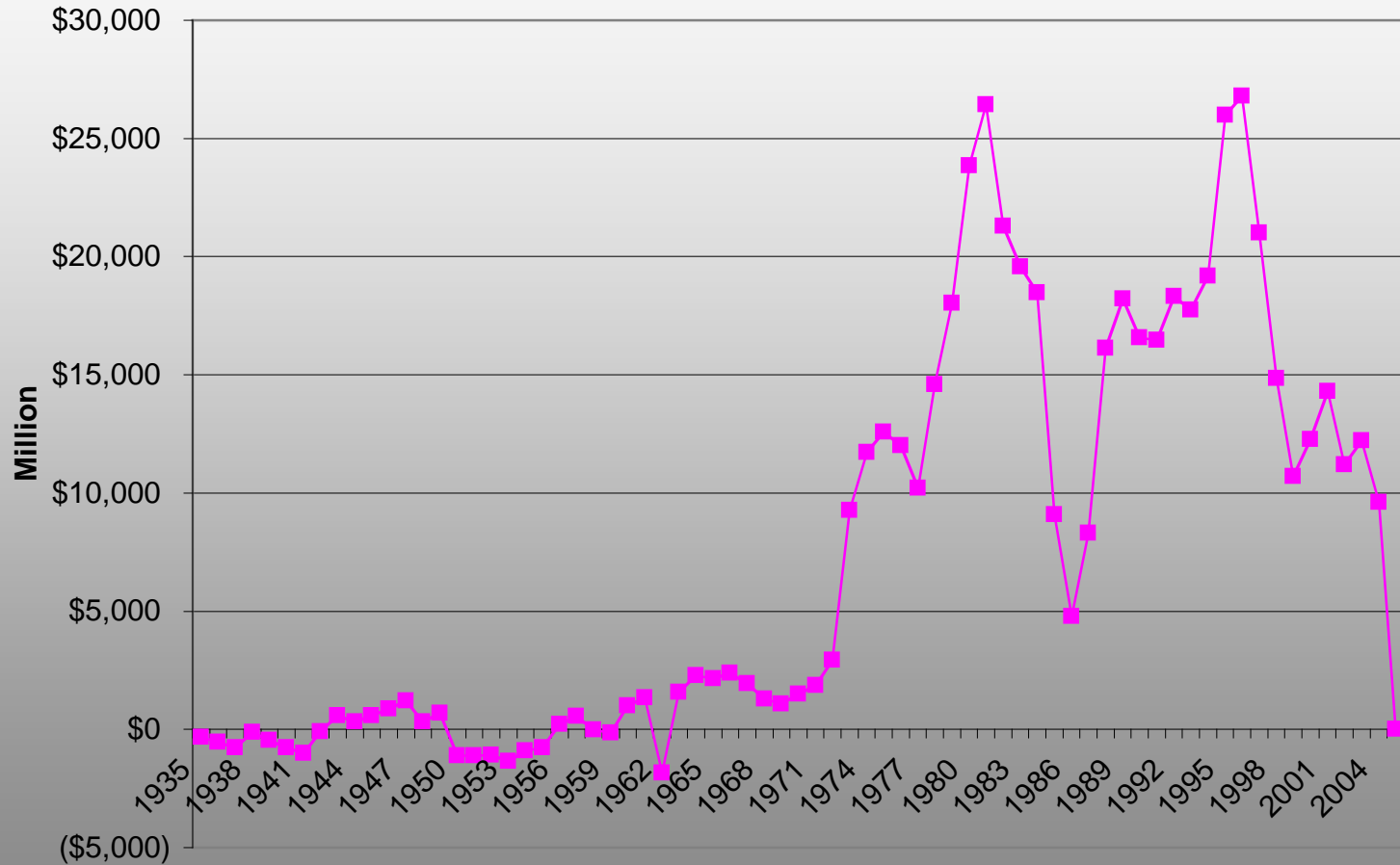
Percent of Iowa Farmland by Residence of Owner



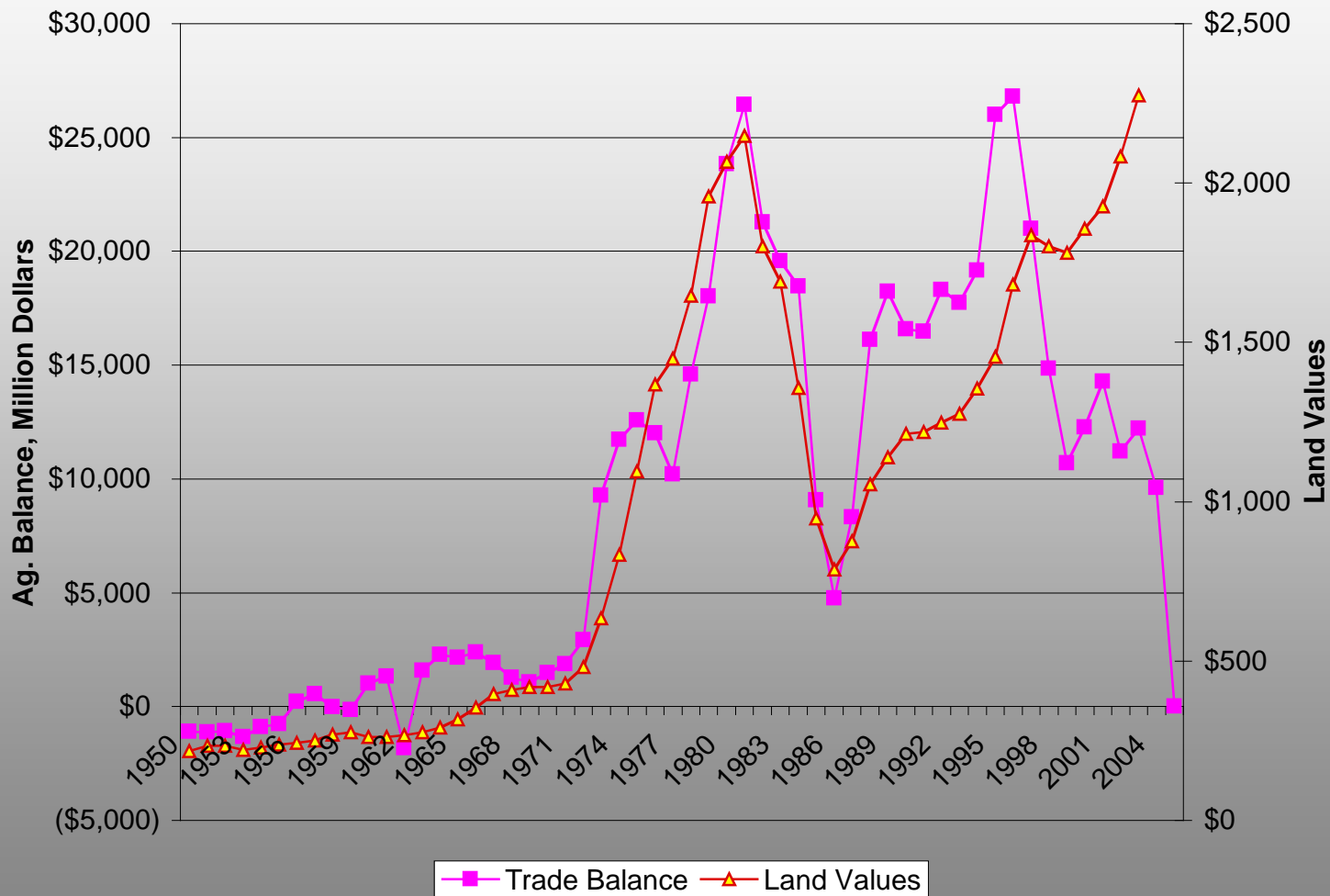
Percent Change in CPI from Previous Year



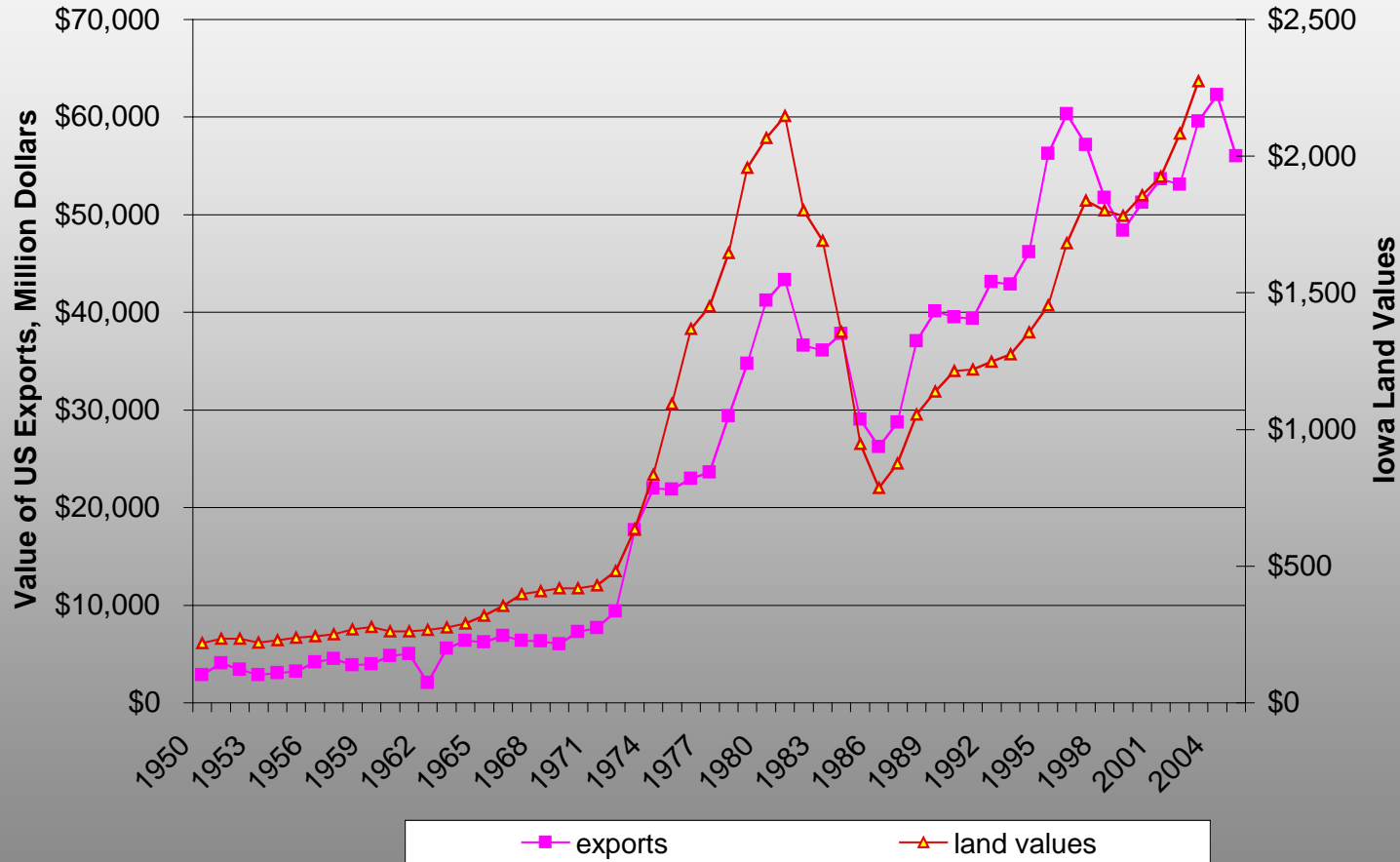
U.S. Agricultural Balance of Trade



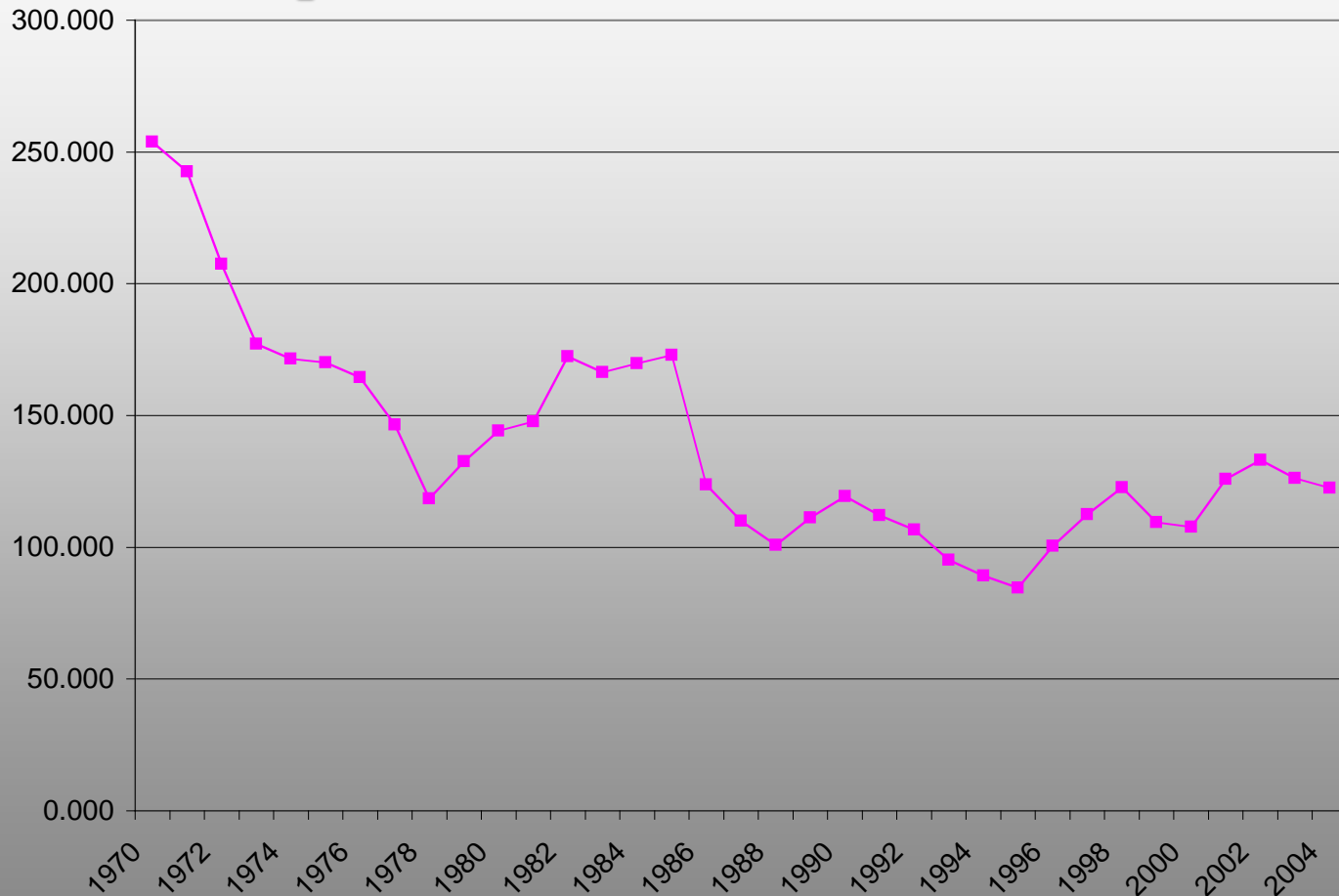
Ag Trade Balance and Iowa Land Values



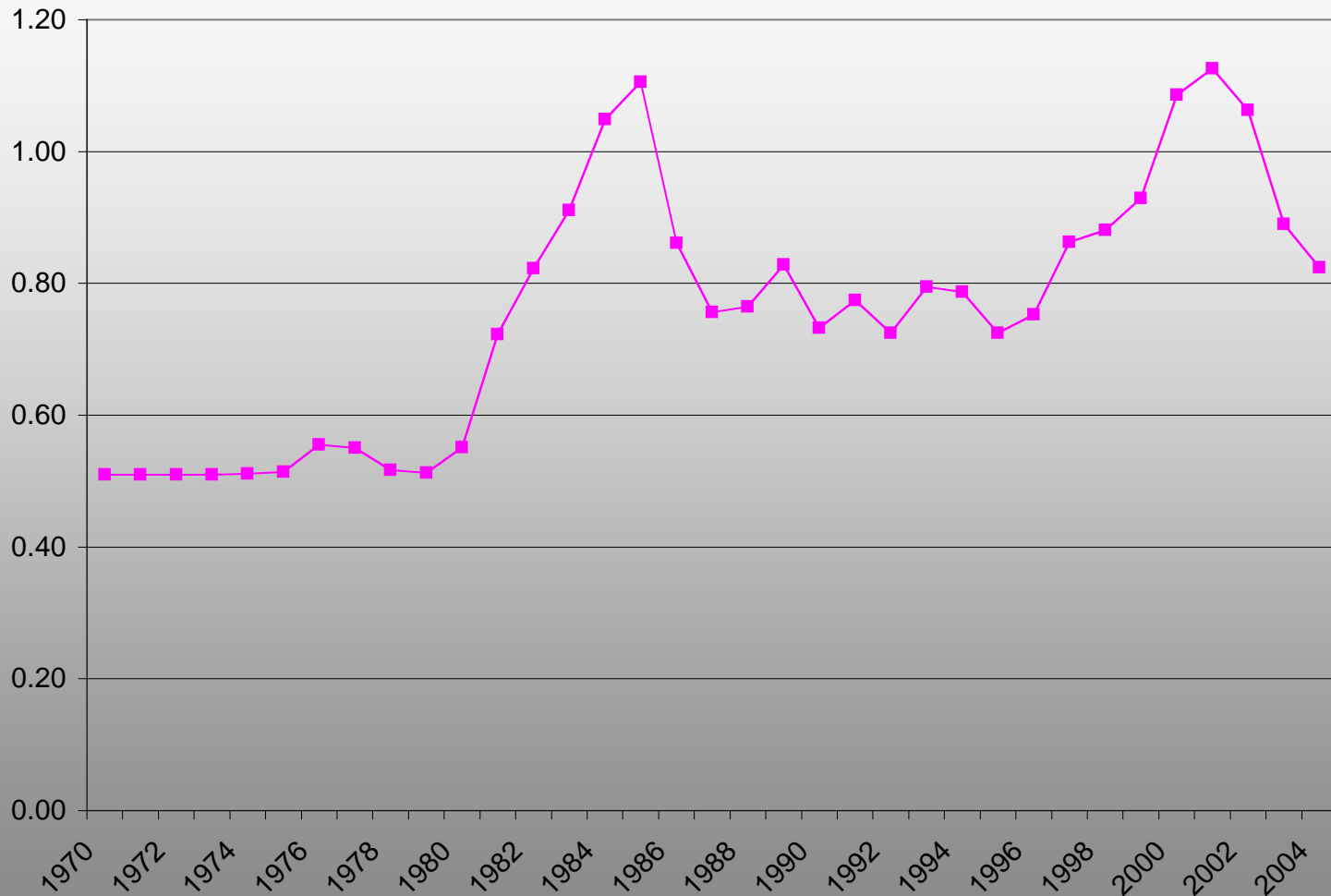
U.S. Ag Exports and Iowa Land Values



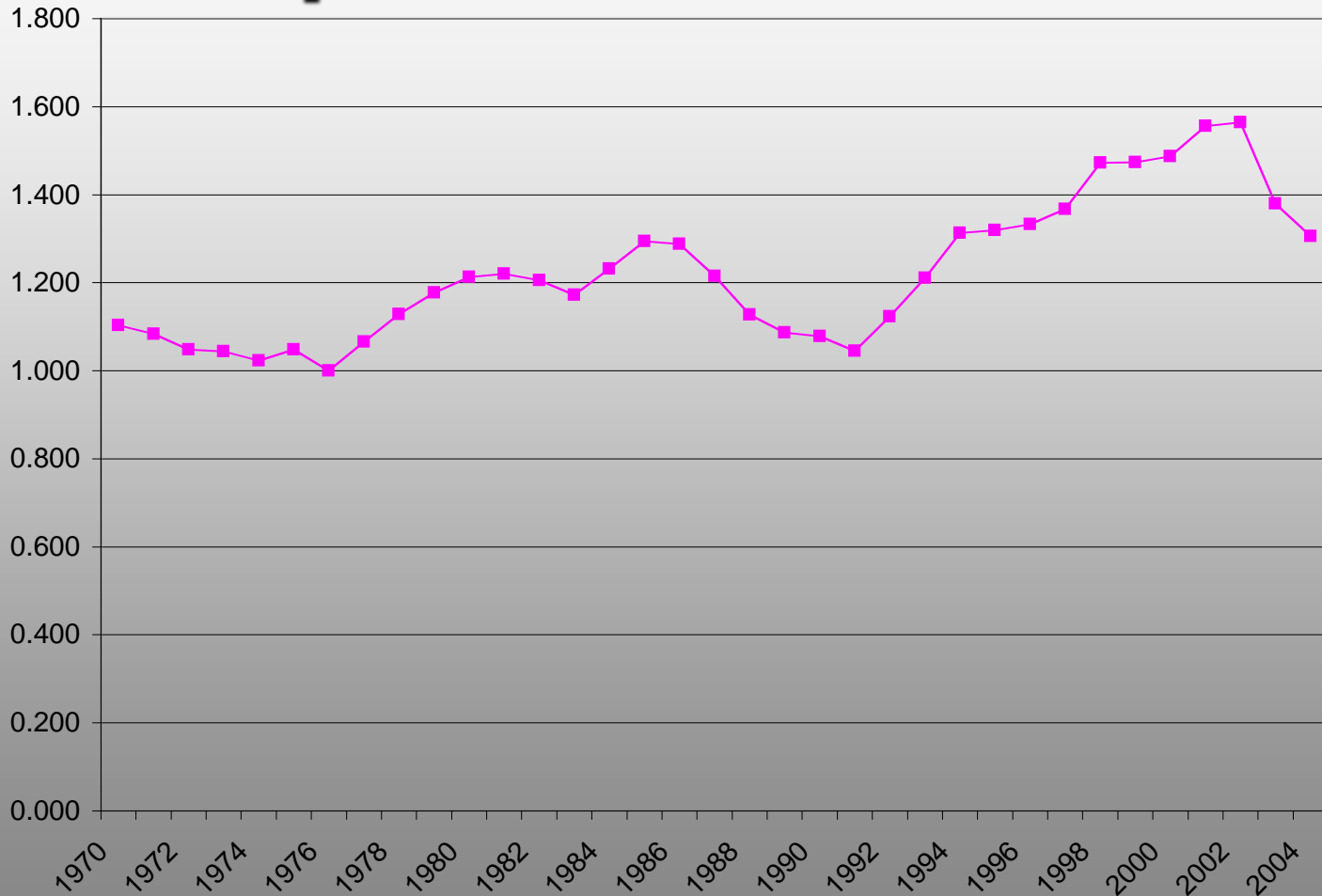
Real Japanese Yen per U.S. Dollar



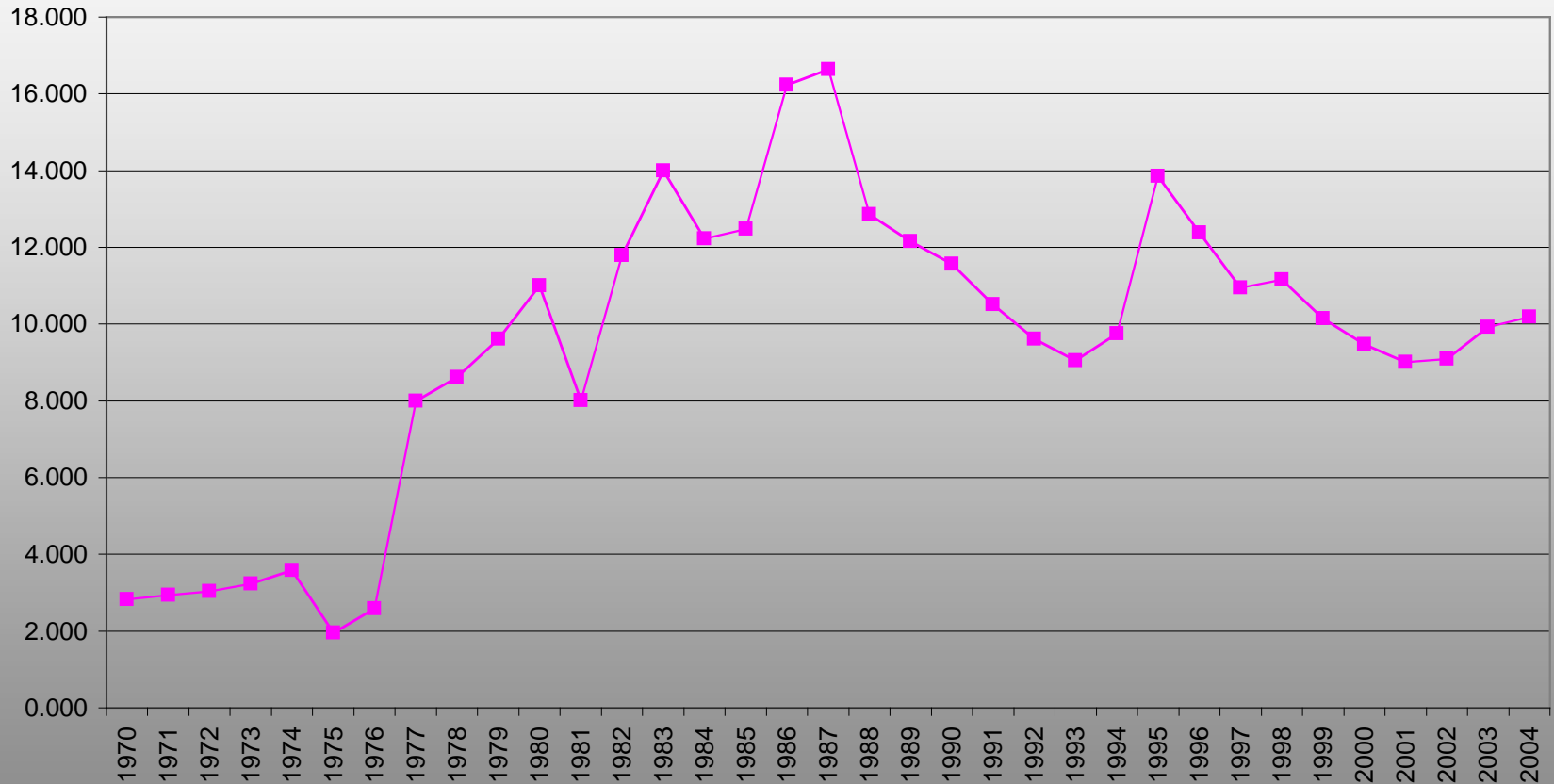
Real Euros Per U.S. Dollar



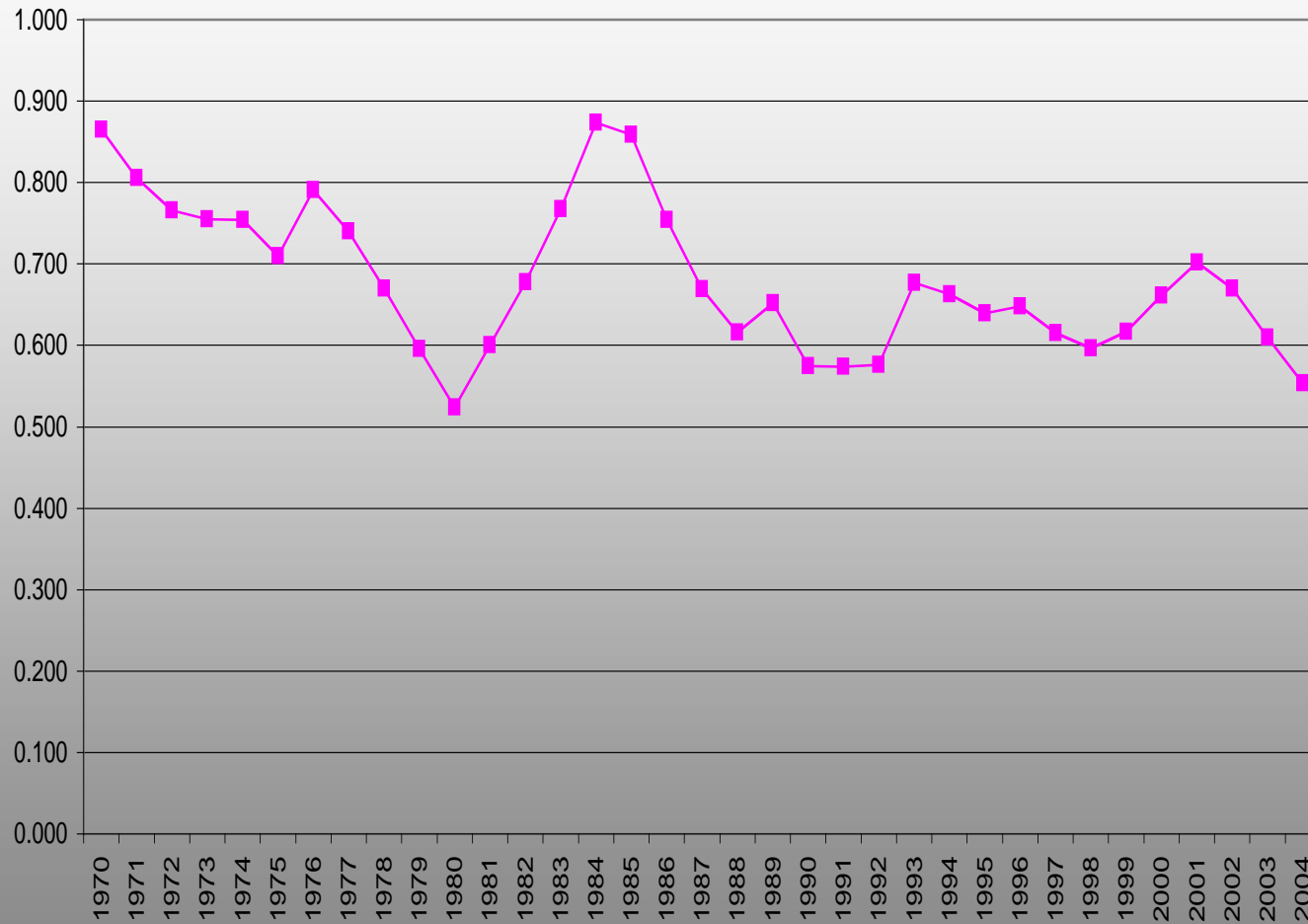
Real Canadian Dollars per U.S. Dollar



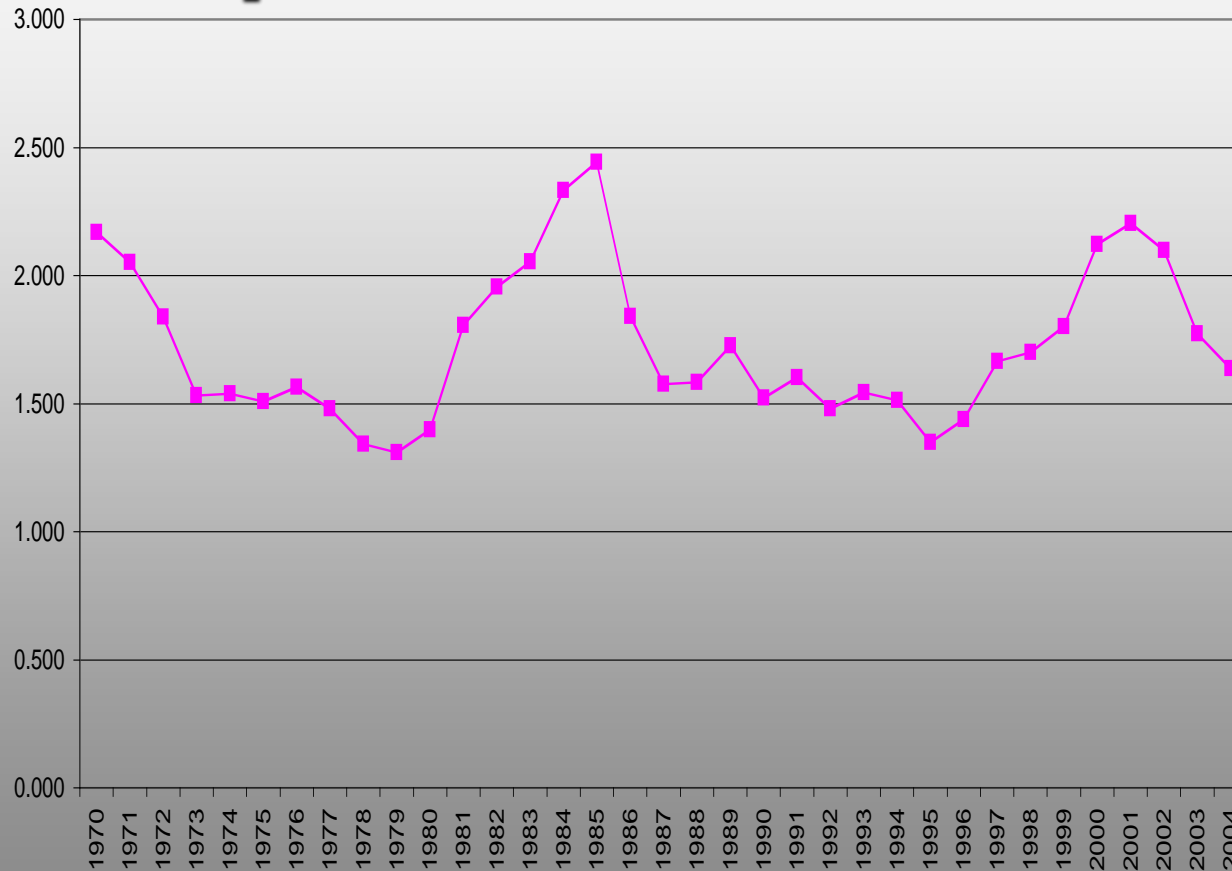
Real Mexican Pesos per U.S. Dollar



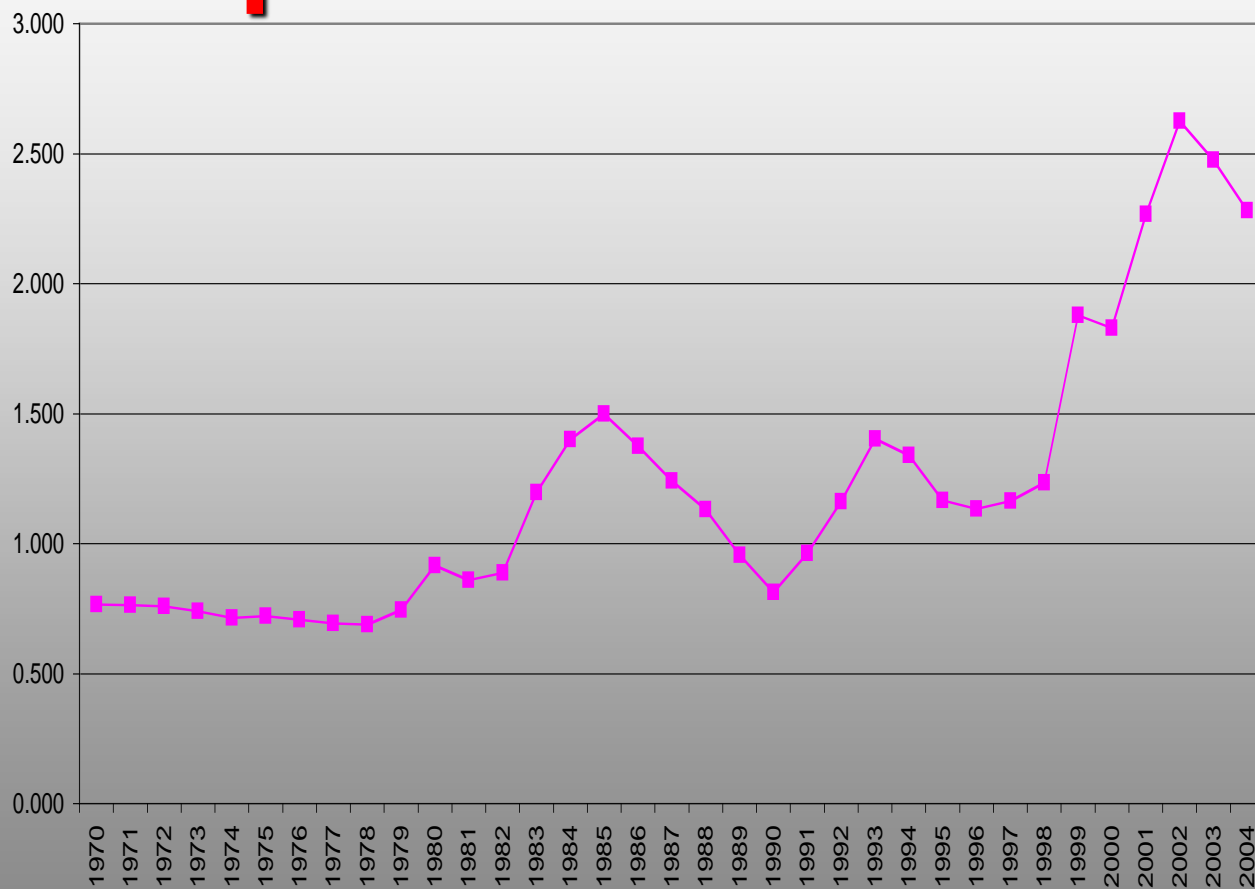
Real UK Pounds per U.S. Dollar



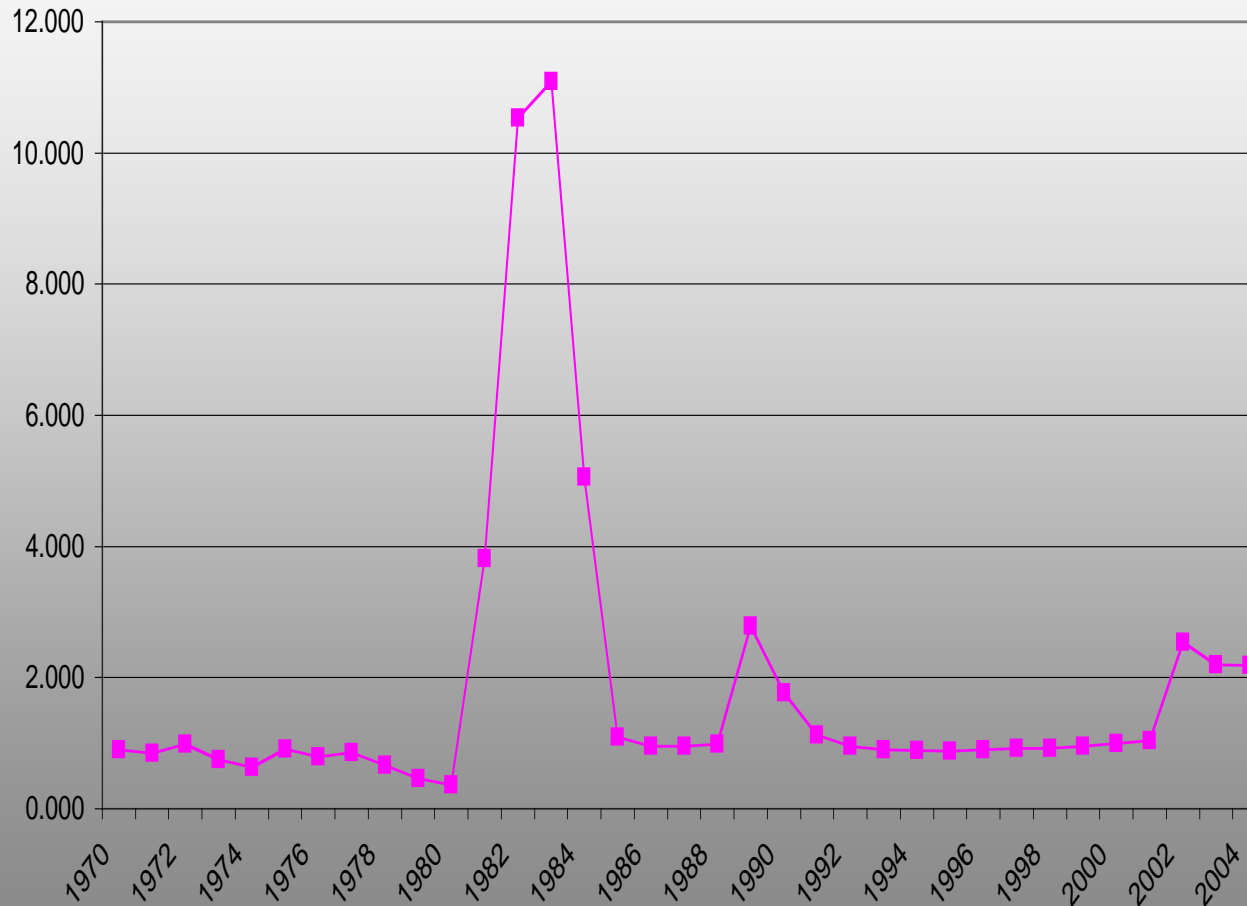
Real Deutsche Marks per U.S. Dollar



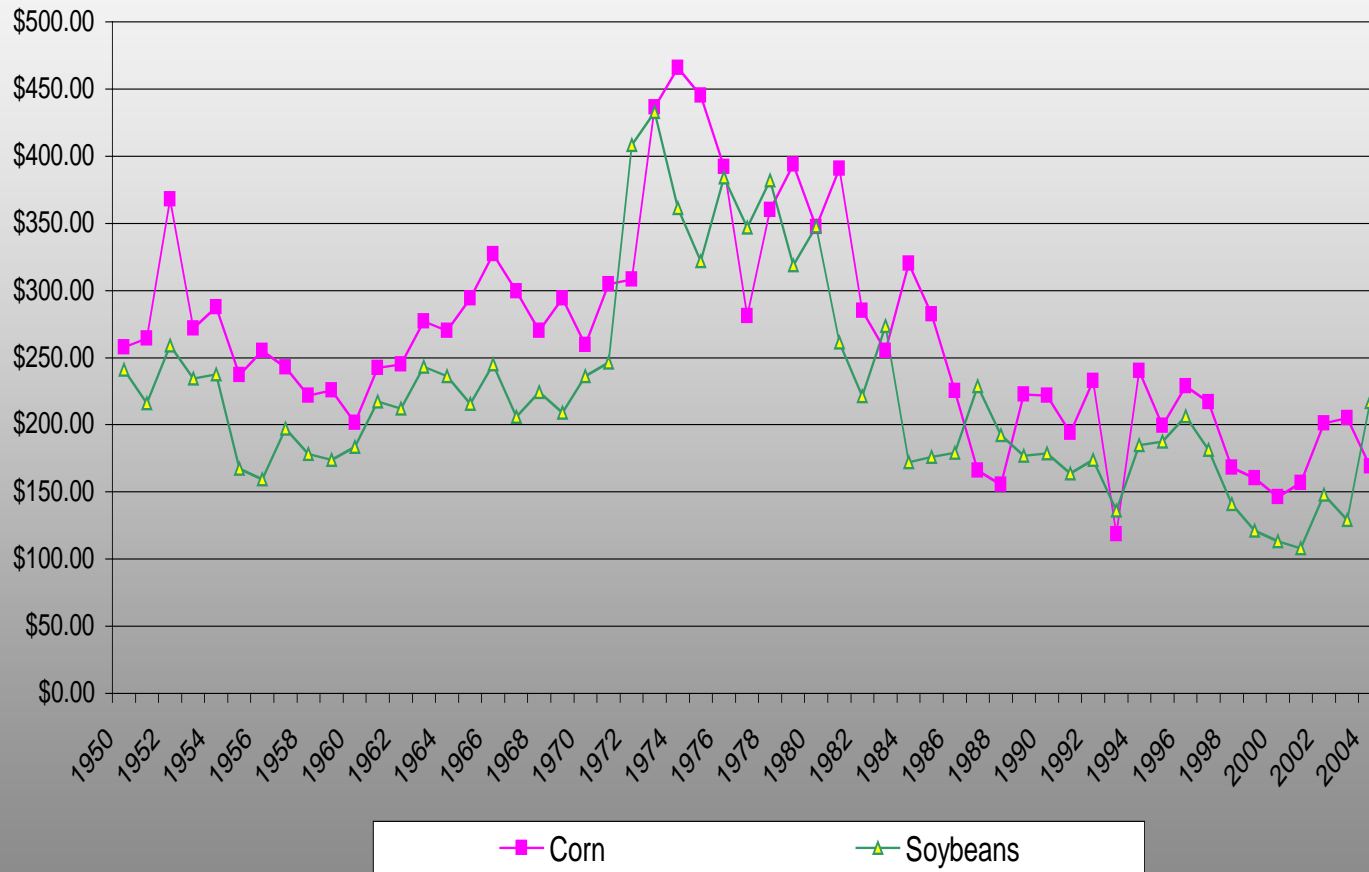
Real Brazilian Reals per U.S. Dollar



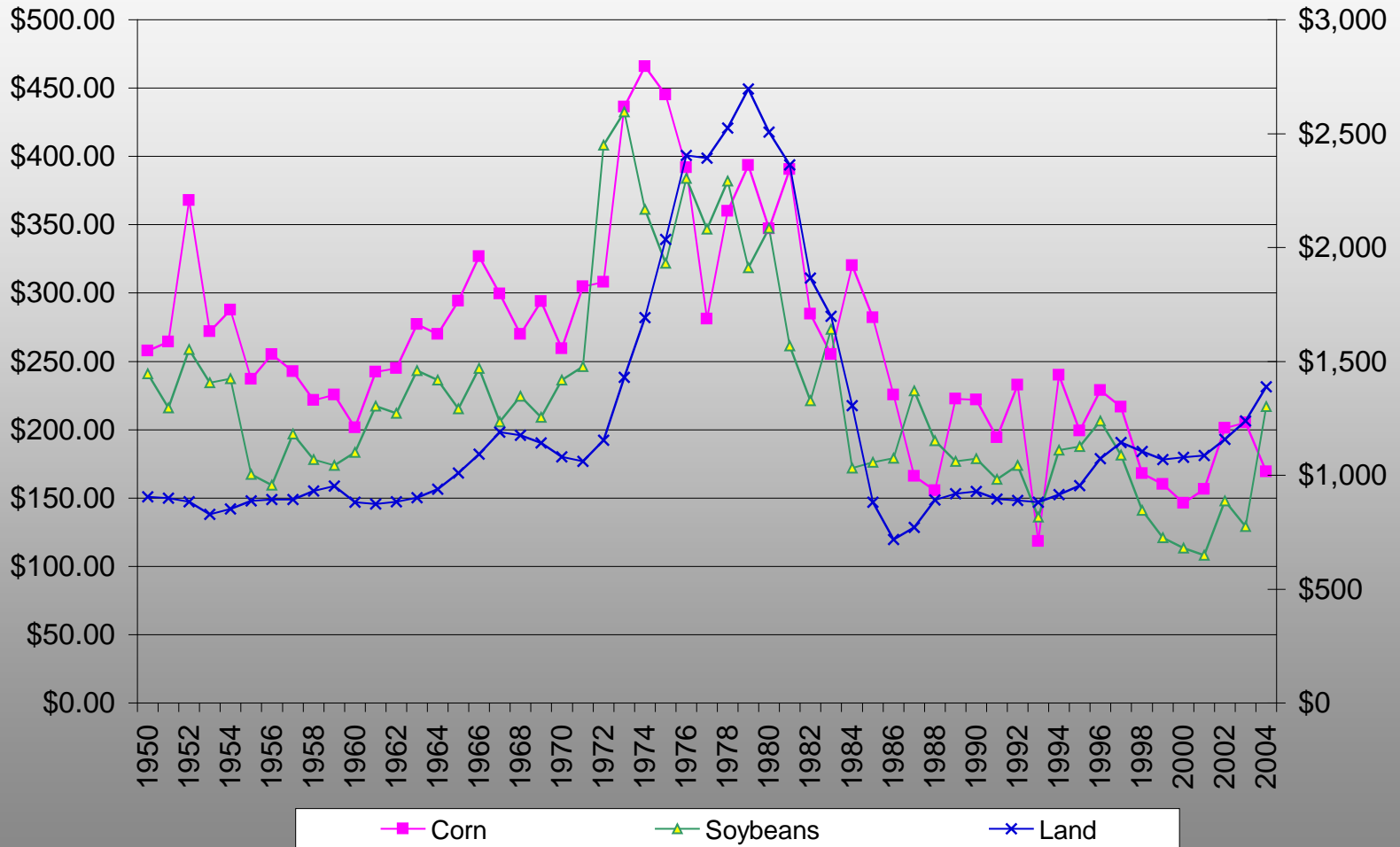
Real Argentina Pesos per U.S. Dollar



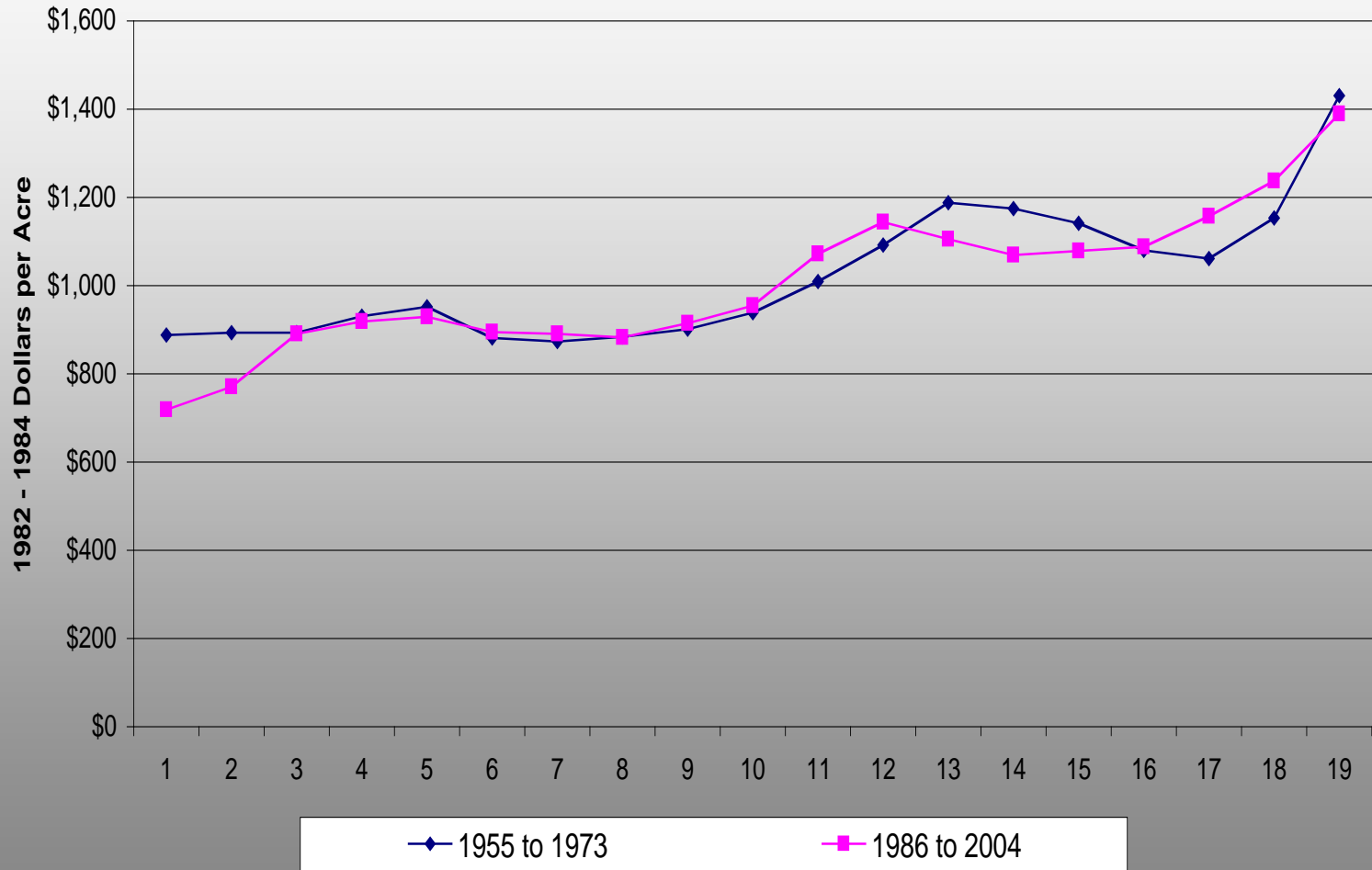
Real Corn and Soybean Gross Revenue per Acre



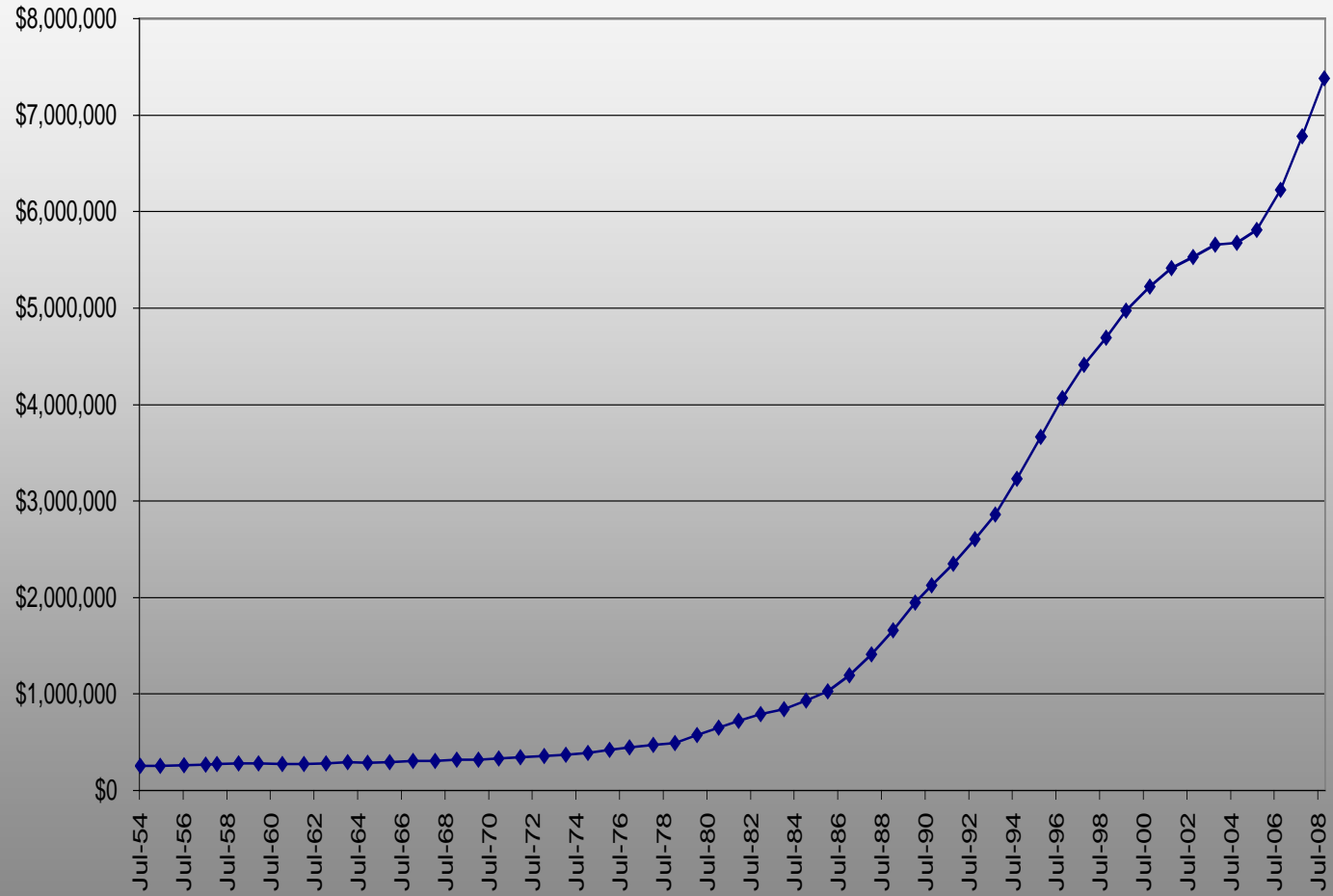
Real Corn and Soybean Gross Revenue and Land Values



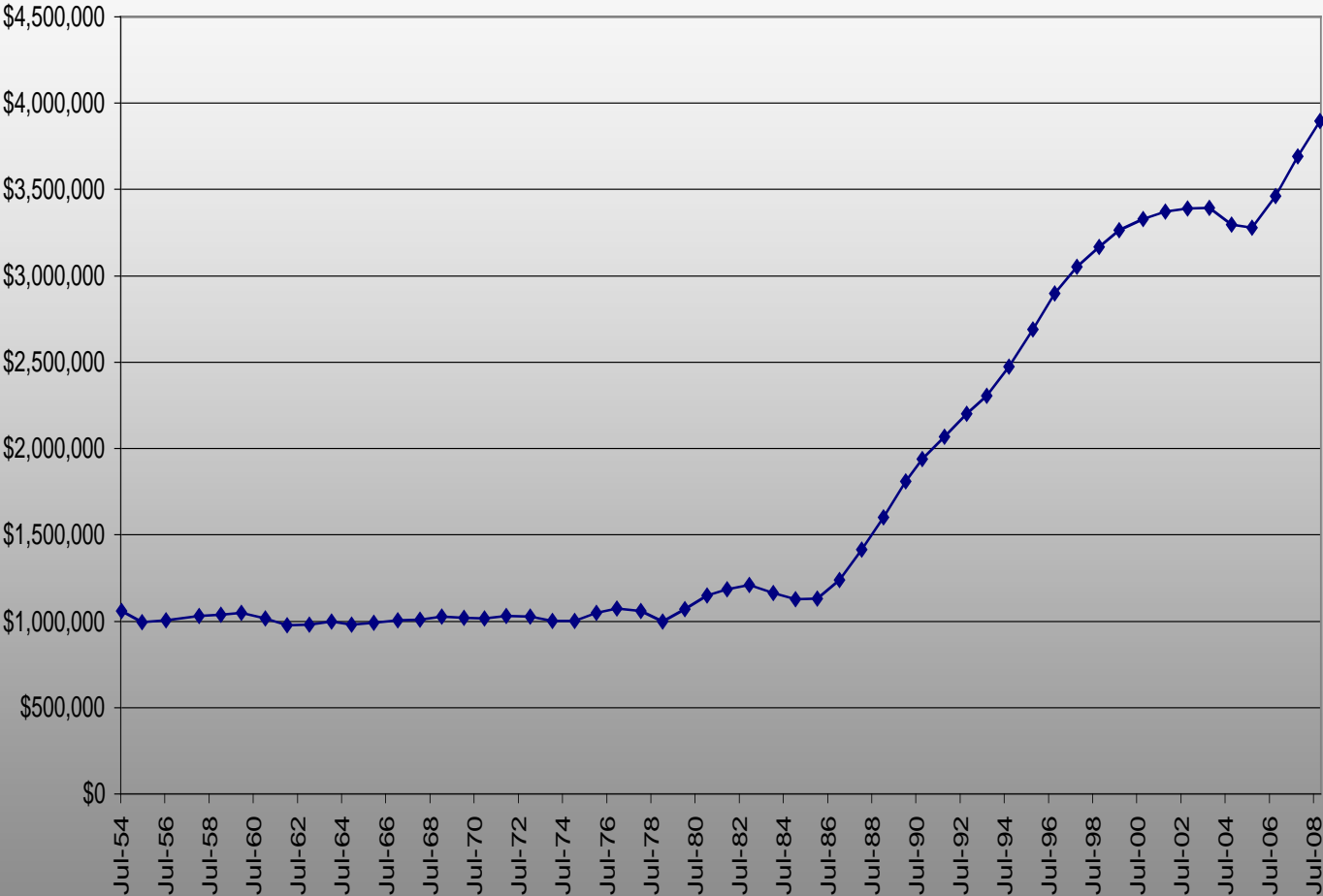
Inflation Adjusted Land Values for Different Time Periods



Total U.S. Debt in Millions



Real U.S. Debt in Millions



For More Information

Visit our Web Page at

<http://www.extension.iastate.edu/emms/lvs2004>